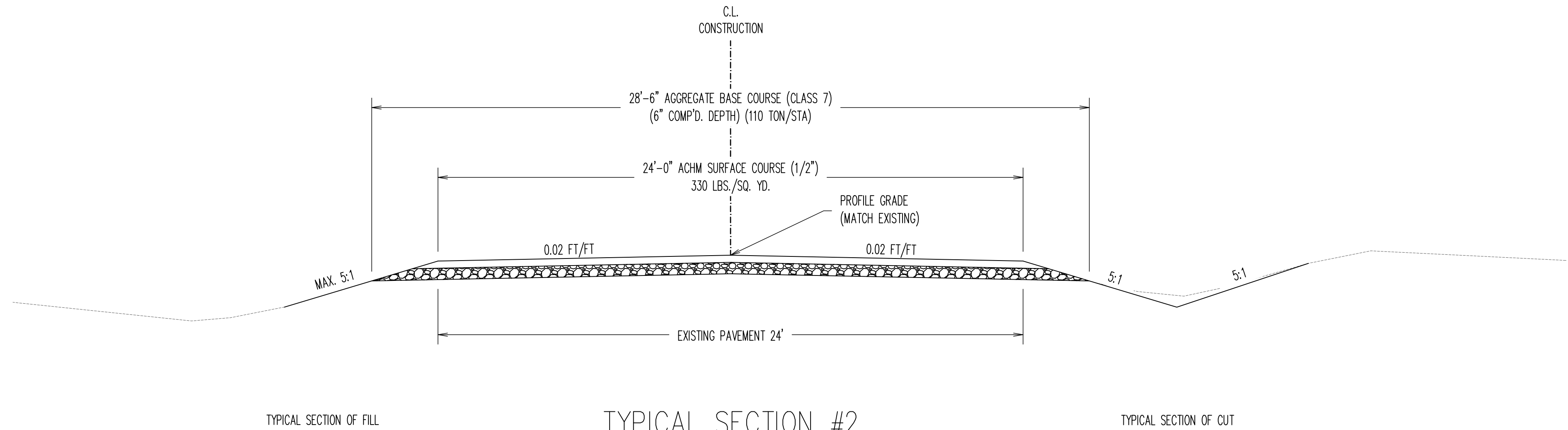
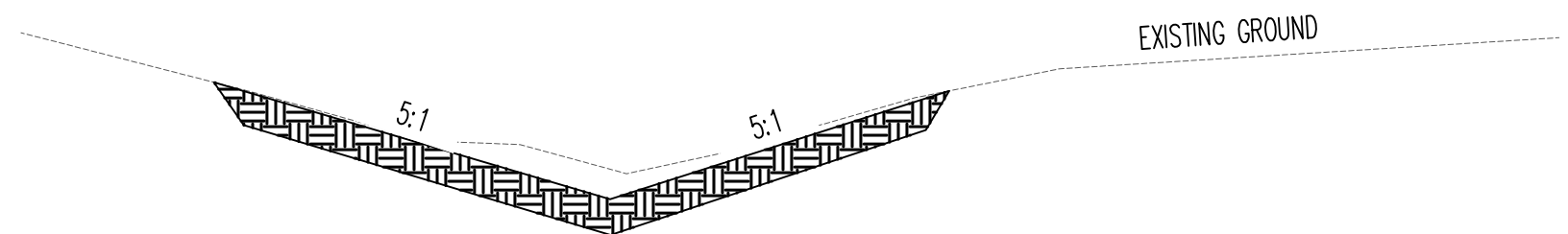


TYPICAL SECTION #1
WYNNE SPORTS COMPLEX
SEE PLANS FOR USE AT ROUNDABOUT SITES



TYPICAL SECTION #2
WYNNE SPORTS COMPLEX
STA. 10+00 - STA. 16+83



TYPICAL SECTION #3
TYPICAL SECTION OF DITCH RESHAPING
SEE PLANS FOR LOCATION AND GEOMETRY

TYPICAL SECTIONS OF IMPVT.

WYNNE SPORTS COMPLEX
WYNNE, CROSS COUNTY, ARKANSAS

PRELIMINARY

MATTHEW ROWE
ARKANSAS - PE # 18051

CERTIFICATE OF AUTHORITY
FISHER ARNOLD
248
ARKANSAS

FISHER & ARNOLD, INC.
Arkansas - 248

CLIENT:
CITY OF WYNNE

COPYRIGHT 2023, ALL RIGHTS RESERVED

REVISIONS		
DATE	BY	DESCRIPTION

PROJECT NO.	
CTYWYNNE.0001TR	
DRAWN BY	CHECKED BY
MS	MJR
DATE	SCALE
9/14/23	N.T.S.

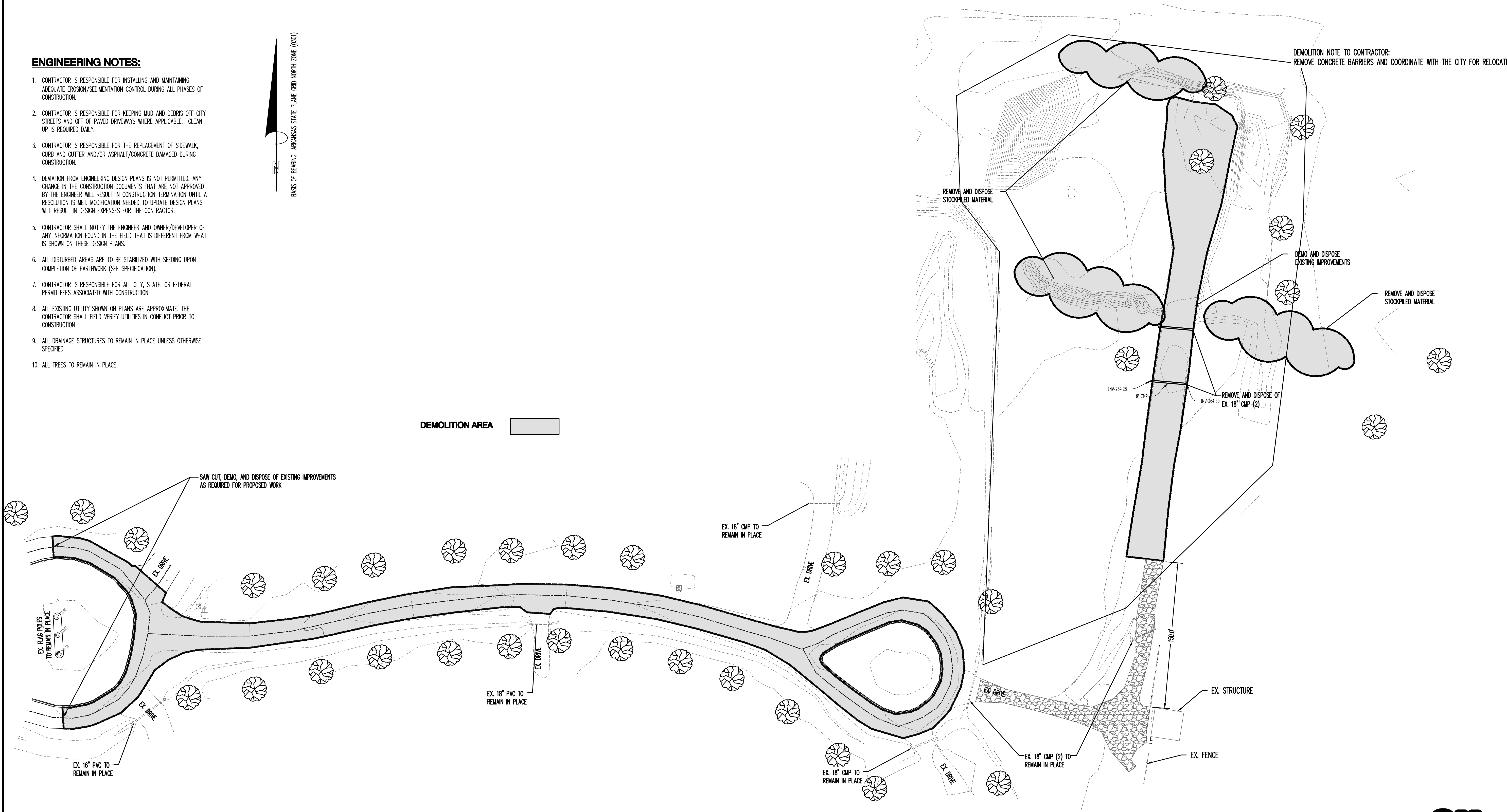
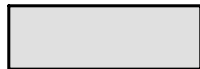
SHEET
C2

ENGINEERING NOTES:

1. CONTRACTOR IS RESPONSIBLE FOR INSTALLING AND MAINTAINING ADEQUATE EROSION/SEDIMENTATION CONTROL DURING ALL PHASES OF CONSTRUCTION.
2. CONTRACTOR IS RESPONSIBLE FOR KEEPING MUD AND DEBRIS OFF CITY STREETS AND OFF OF PAVED DRIVEWAYS WHERE APPLICABLE. CLEAN UP IS REQUIRED DAILY.
3. CONTRACTOR IS RESPONSIBLE FOR THE REPLACEMENT OF SIDEWALK, CURB AND GUTTER AND/OR ASPHALT/CONCRETE DAMAGED DURING CONSTRUCTION.
4. DEVIATION FROM ENGINEERING DESIGN PLANS IS NOT PERMITTED. ANY CHANGE IN THE CONSTRUCTION DOCUMENTS THAT ARE NOT APPROVED BY THE ENGINEER WILL RESULT IN CONSTRUCTION TERMINATION UNTIL A RESOLUTION IS MET. MODIFICATION NEEDED TO UPDATE DESIGN PLANS WILL RESULT IN DESIGN EXPENSES FOR THE CONTRACTOR.
5. CONTRACTOR SHALL NOTIFY THE ENGINEER AND OWNER/DEVELOPER OF ANY INFORMATION FOUND IN THE FIELD THAT IS DIFFERENT FROM WHAT IS SHOWN ON THESE DESIGN PLANS.
6. ALL DISTURBED AREAS ARE TO BE STABILIZED WITH SEEDING UPON COMPLETION OF EARTHWORK (SEE SPECIFICATION).
7. CONTRACTOR IS RESPONSIBLE FOR ALL CITY, STATE, OR FEDERAL PERMIT FEES ASSOCIATED WITH CONSTRUCTION.
8. ALL EXISTING UTILITY SHOWN ON PLANS ARE APPROXIMATE. THE CONTRACTOR SHALL FIELD VERIFY UTILITIES IN CONFLICT PRIOR TO CONSTRUCTION.
9. ALL DRAINAGE STRUCTURES TO REMAIN IN PLACE UNLESS OTHERWISE SPECIFIED.
10. ALL TREES TO REMAIN IN PLACE.



DEMOLITION AREA



DEMOLITION NOTE TO CONTRACTOR:
REMOVE CONCRETE BARRIERS AND COORDINATE WITH THE CITY FOR RELOCATION

REMOVE AND DISPOSE
STOCKPILED MATERIAL

DEMO AND DISPOSE
EXISTING IMPROVEMENTS

REMOVE AND DISPOSE
STOCKPILED MATERIAL

REMOVE AND DISPOSE OF
EX. 18\"/>

EX. 18\"/>

EX. DRIVE

EX. 18\"/>

EX. DRIVE

EX. 16\"/>

EX. DRIVE

EX. FLAG POLES
TO REMAIN IN PLACE

EX. 18\"/>

EX. DRIVE

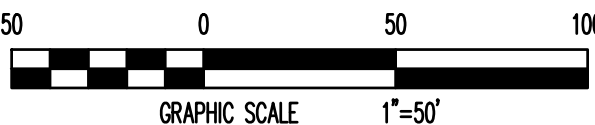
EX. 18\"/>

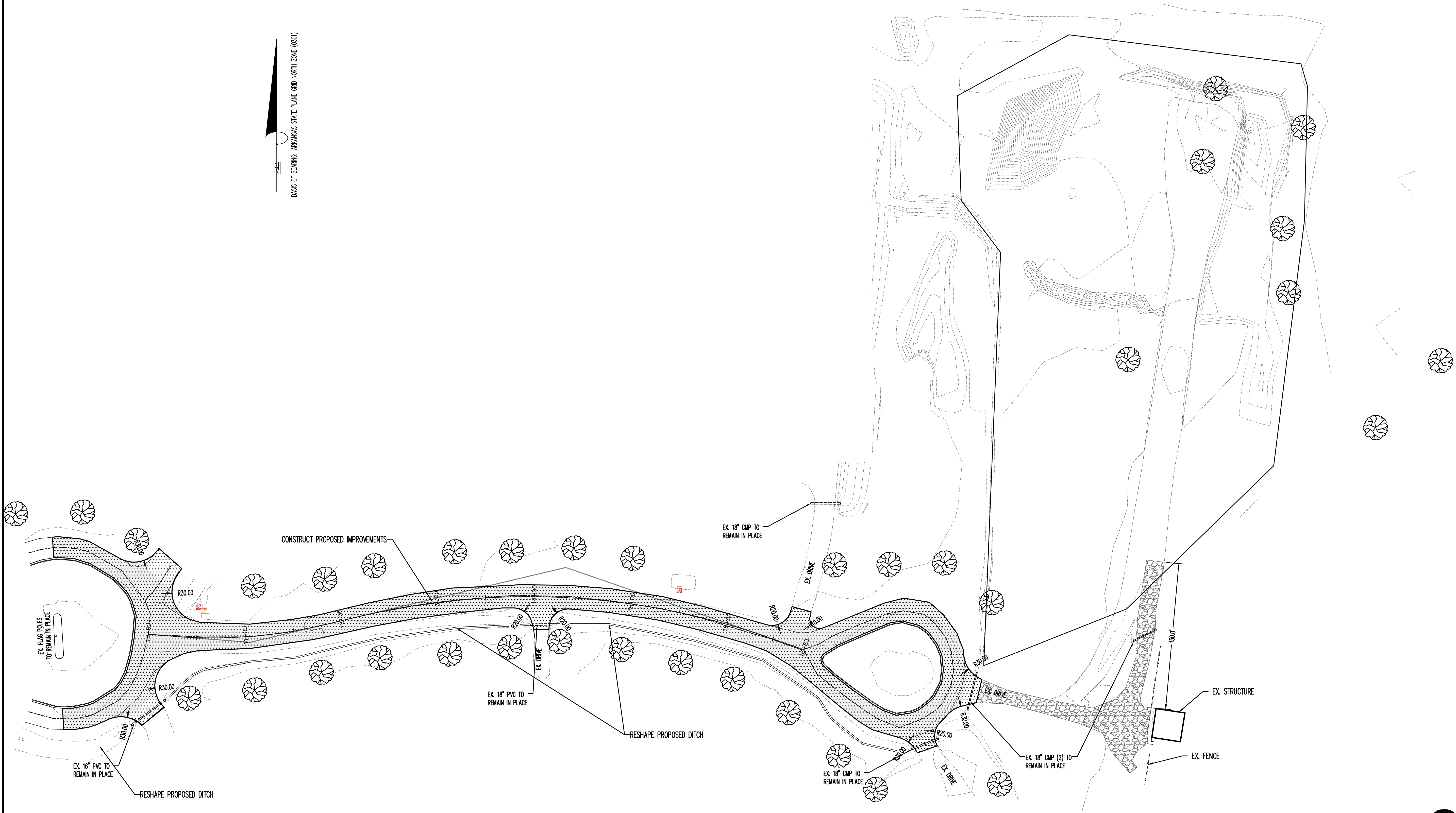
EX. STRUCTURE

EX. FENCE




Know what's below.
Call before you dig.






BASE OF BEARING: ARKANSAS STATE PLANE GRID NORTH ZONE (000)



Know what's below.
Call before you dig.



50 0 50 100
GRAPHIC SCALE 1"=50'

PRELIMINARY

MATTHEW ROWE
ARKANSAS - PE # 18051



FISHER & ARNOLD, INC. Arkansas - 248	
CLIENT: CITY OF WYNNE	
COPYRIGHT 2023, ALL RIGHTS RESERVED	
REVISIONS	
DATE	DESCRIPTION
PROJECT NO. CTYWYNNE_0001TR	
DRAWN BY MS	CHECKED BY MJR
DATE 9/14/23	SCALE 1"=50'
SHEET C4	

GENERAL NOTES:

1. THE STORM WATER POLLUTION PREVENTION PLAN (SWPPP) MEASURES PRESENTED ON THIS PLAN ARE INTENDED TO MINIMIZE POLLUTANT LOADS OCCURRING IN STORM WATER DISCHARGES FROM THE CONSTRUCTION SITE.
2. THE CONTROL MEASURES SHALL BE PROPERLY SELECTED, INSTALLED, AND MAINTAINED IN ACCORDANCE WITH THE MANUFACTURER'S SPECIFICATIONS, GOOD ENGINEERING, AND CONSTRUCTION PRACTICES.
3. IF THERE ARISES ANY QUESTIONS REGARDING PERMIT COMPLIANCE, IT IS THE RESPONSIBILITY OF THE RESPONSIBLE OFFICIAL AND/ OR THE GENERAL CONTRACTOR'S TO REFER TO THE AR150000 PERMIT AND/ OR THE ENGINEER OF RECORD.
4. THE OPERATOR, RESPONSIBLE COGNIZANT OFFICIAL IS REQUIRED TO PROVIDE A DESCRIPTION OF MEASURES THAT WILL BE INSTALLED DURING THE CONSTRUCTION PROCESS TO CONTROL POLLUTANTS IN STORMWATER DISCHARGES THAT WILL OCCUR AFTER CONSTRUCTION IS COMPLETE TO ENSURE MINIMIZING POLLUTANT DISCHARGE UNTIL FINAL STABILIZATION IS OBTAINED.
3. AREAS WHERE CONSTRUCTION ACTIVITIES HAVE TEMPORARILY CEASED, STABILIZATION MEASURES MUST BE TAKEN NO LATER THAN 14 CALENDAR DAYS AFTER CONSTRUCTION ACTIVITIES HAVE CEASED; AREAS WHERE CONSTRUCTION ACTIVITIES HAVE PERMANENTLY CEASED, STABILIZATION MEASURES MUST BE TAKEN IMMEDIATELY.

EROSION AND SEDIMENT CONTROL NOTES:

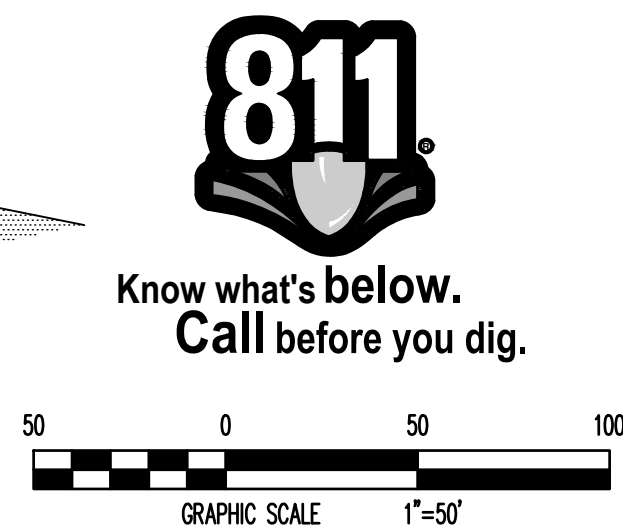
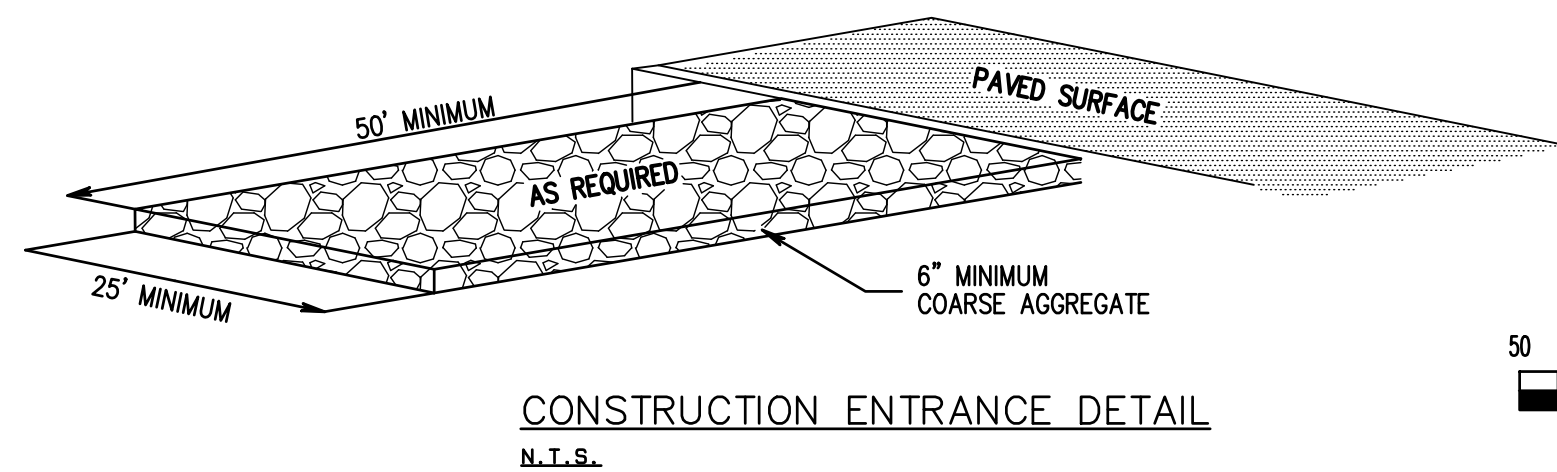
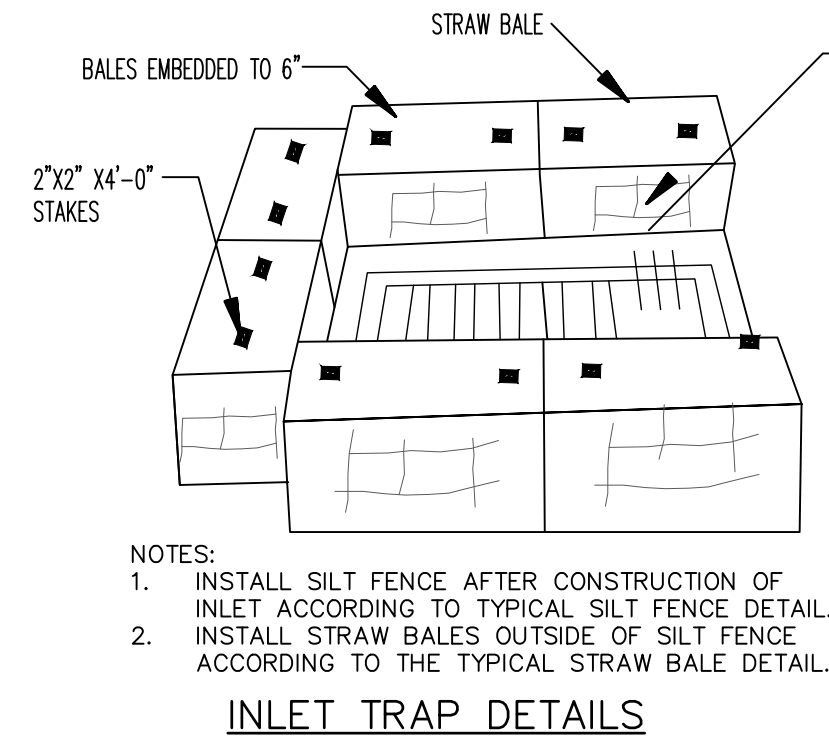
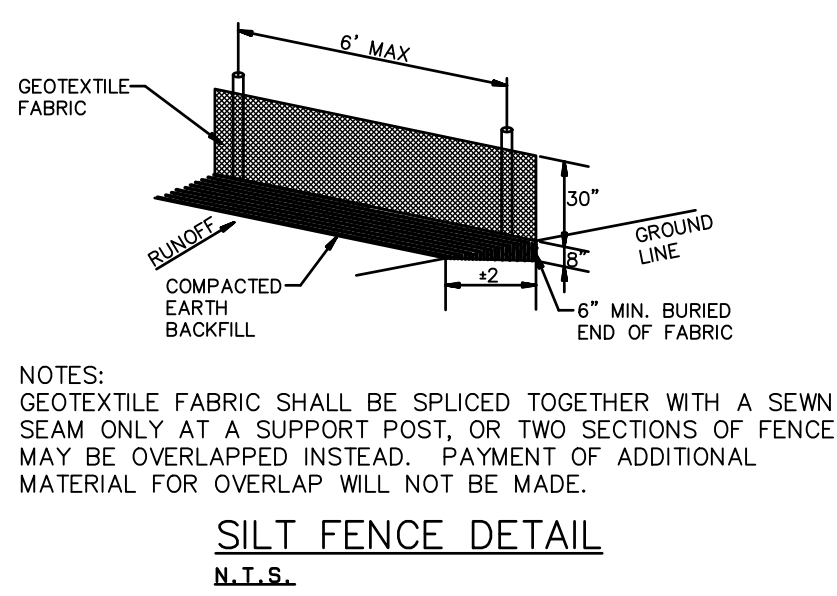
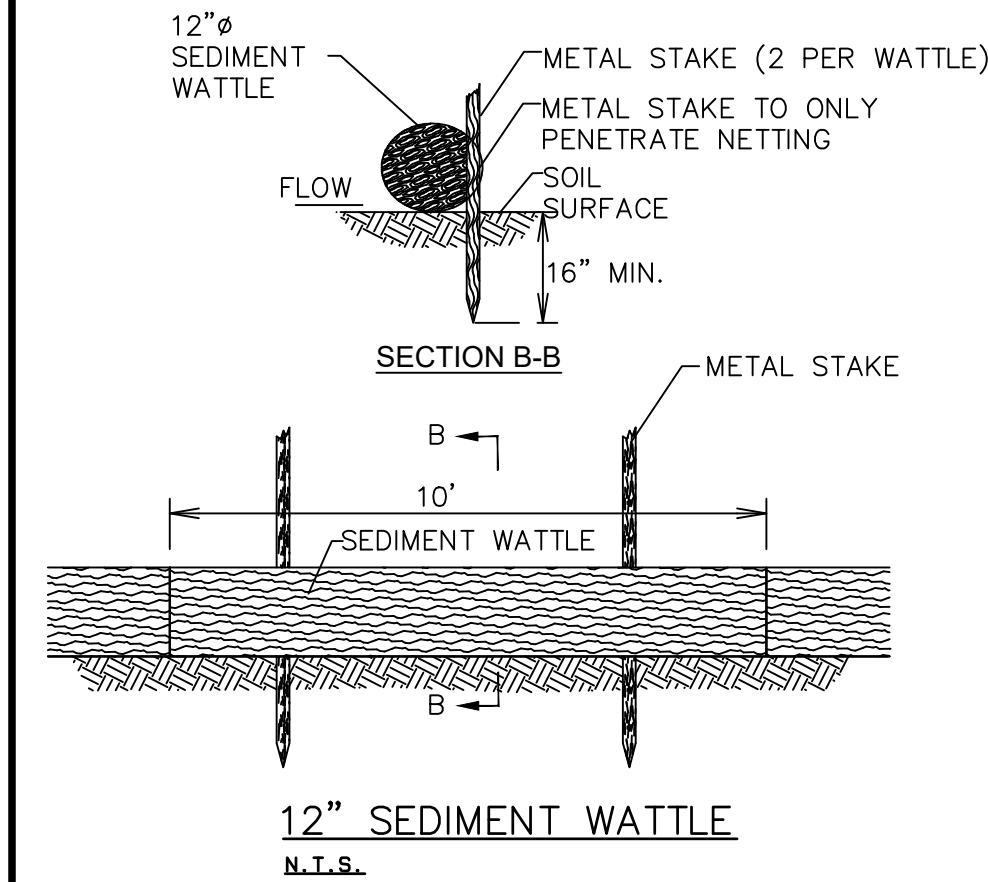
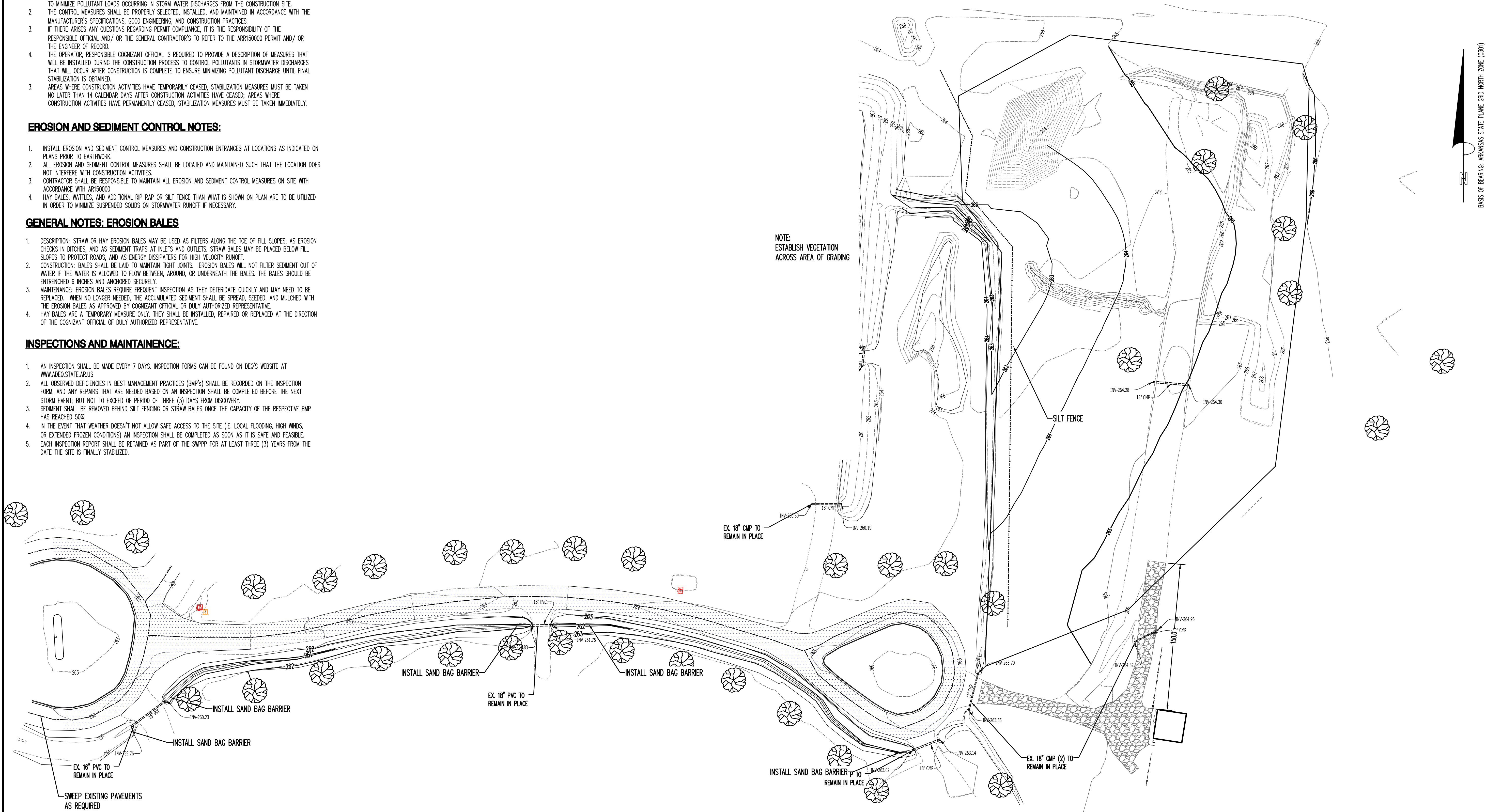
1. INSTALL EROSION AND SEDIMENT CONTROL MEASURES AND CONSTRUCTION ENTRANCES AT LOCATIONS AS INDICATED ON PLANS PRIOR TO EARTHWORK.
2. ALL EROSION AND SEDIMENT CONTROL MEASURES SHALL BE LOCATED AND MAINTAINED SUCH THAT THE LOCATION DOES NOT INTERFERE WITH CONSTRUCTION ACTIVITIES.
3. CONTRACTOR SHALL BE RESPONSIBLE TO MAINTAIN ALL EROSION AND SEDIMENT CONTROL MEASURES ON SITE WITH ACCORDANCE WITH AR150000
4. HAY BALES, WATTLES, AND ADDITIONAL RIP RAP OR SILT FENCE THAN WHAT IS SHOWN ON PLAN ARE TO BE UTILIZED IN ORDER TO MINIMIZE SUSPENDED SOLIDS ON STORMWATER RUNOFF IF NECESSARY.

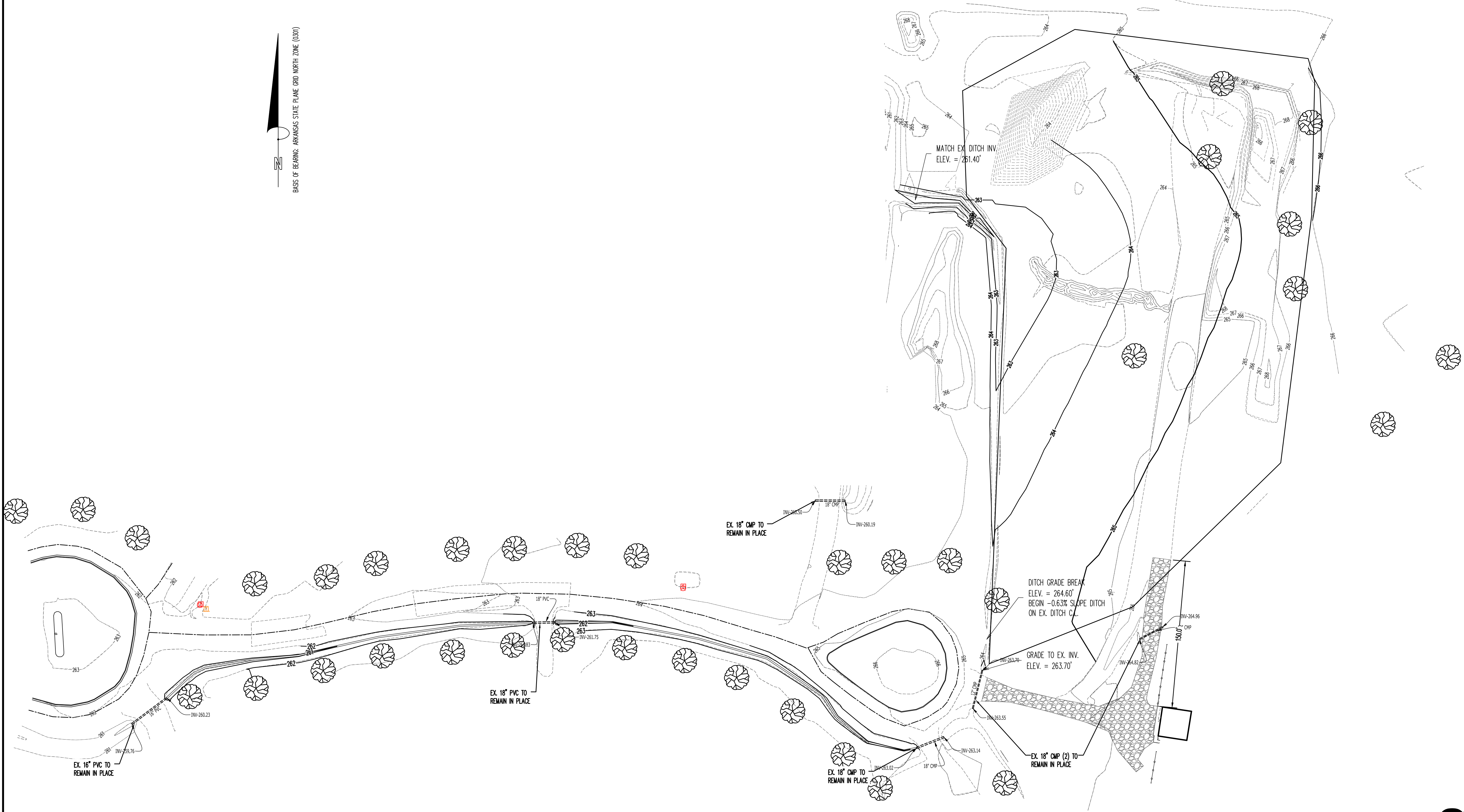
GENERAL NOTES: EROSION BALES

1. DESCRIPTION: STRAW OR HAY EROSION BALES MAY BE USED AS FILTERS ALONG THE TOE OF FILL SLOPES, AS EROSION CHECKS IN DITCHES, AND AS SEDIMENT TRAPS AT INLETS AND OUTLETS. STRAW BALES MAY BE PLACED BELOW FILL SLOPES TO PROTECT ROADS, AND AS ENERGY DISSIPATORS FOR HIGH VELOCITY RUNOFF.
2. CONSTRUCTION: BALES SHALL BE Laid TO MAINTAIN TIGHT JOINTS. EROSION BALES WILL NOT FILTER SEDIMENT OUT OF WATER IF THE WATER IS ALLOWED TO FLOW BETWEEN, AROUND, OR UNDERNEATH THE BALES. THE BALES SHOULD BE ENTRENCHED 6 INCHES AND ANCHORED SECURELY.
3. MAINTENANCE: EROSION BALES REQUIRE FREQUENT INSPECTION AS THEY DETERIORATE QUICKLY AND MAY NEED TO BE REPLACED. WHEN NO LONGER NEEDED, THE ACCUMULATED SEDIMENT SHALL BE SPREAD, SEEDED, AND MULCHED WITH THE EROSION BALES AS APPROVED BY COGNIZANT OFFICIAL OR DULY AUTHORIZED REPRESENTATIVE.
4. HAY BALES ARE A TEMPORARY MEASURE ONLY. THEY SHALL BE INSTALLED, REPAIRED OR REPLACED AT THE DIRECTION OF THE COGNIZANT OFFICIAL OF DULY AUTHORIZED REPRESENTATIVE.

INSPECTIONS AND MAINTAINENCE:

1. AN INSPECTION SHALL BE MADE EVERY 7 DAYS. INSPECTION FORMS CAN BE FOUND ON DEO'S WEBSITE AT WWW.ADEQ.STATE.AR.US
2. ALL OBSERVED DEFICIENCIES IN BEST MANAGEMENT PRACTICES (BMP's) SHALL BE RECORDED ON THE INSPECTION FORM, AND ANY REPAIRS THAT ARE NEEDED BASED ON AN INSPECTION SHALL BE COMPLETED BEFORE THE NEXT STORM EVENT; BUT NOT TO EXCEED OF PERIOD OF THREE (3) DAYS FROM DISCOVERY.
3. SEDIMENT SHALL BE REMOVED BEHIND SILT FENCING OR STRAW BALES ONCE THE CAPACITY OF THE RESPECTIVE BMP HAS REACHED 50%.
4. IN THE EVENT THAT WEATHER DOESN'T NOT ALLOW SAFE ACCESS TO THE SITE (IE: LOCAL FLOODING, HIGH WINDS, OR EXTENDED FROZEN CONDITIONS) AN INSPECTION SHALL BE COMPLETED AS SOON AS IT IS SAFE AND FEASIBLE.
5. EACH INSPECTION REPORT SHALL BE RETAINED AS PART OF THE SWPPP FOR AT LEAST THREE (3) YEARS FROM THE DATE THE SITE IS FINALLY STABILIZED.





811
Know what's below.
Call before you dig.

50 0 50 100
GRAPHIC SCALE 1"=50'

PRELIMINARY

MATTHEW ROWE
ARKANSAS - PE # 18051



FISHER & ARNOLD, INC. Arkansas - 248		
CLIENT: CITY OF WYNNE		
COPYRIGHT 2023, ALL RIGHTS RESERVED		
REVISIONS		
DATE	BY	DESCRIPTION
PROJECT NO. CTY-WYNNE-0001TR		
DRAWN BY MS	CHECKED BY MJR	
DATE 9/14/23	SCALE 1"=50'	
SHEET C6		